



Medium Chess Puzzle # 0067

By

G Bud Games
<https://gbud.in>

November 8, 2021

Contents

Medium Chess puzzle # 0067 - Mate in 3 moves	4
Medium chess puzzle 0067	4
Solution to medium chess puzzle 0067	5
Solution 1	5
Right moves for the solution to the medium chess puzzle 0067	8
Explanation for the moves	8
Categories of medium chess puzzle 0067	9
How to view the solution to medium chess puzzle 0067	9
How to get help for moves in the medium chess puzzle 0067	10
Play chess for free	12

List of Figures

1	Solve this medium chess puzzle 0067. Mate in 3 moves @ https://gbud.in/gzh9242	4
2	Solve this medium chess puzzle online with solution @ https://gbud.in/gzh9242	4
3	Initial board position of medium chess puzzle 0067	5
4	Bxh7+ - If you deflect the opponent's king away from the queen, you can capture the hanging queen. The bishop sacrifices itself to attract the king away from g8	6
5	Kxh7 - Opponent's king is forced to capture the bishop. He can not come to g7 due to the attack from the pawn. If he moves to h8, you can end the game by moving your queen to f8, This is a zugzwang move	6
6	Qxf8 - Your queen captures the opponent's hanging queen and it restricts the opponent's king's movements	7
7	a3 - Since the king does not have any legal moves, one of the pawn moves forward	7
8	Qg7# - Queen moves in and gives a checkmate. Opponent's king can not capture your queen since it is supported by the pawn	8
9	Click the solution button to view solutions @ https://gbud.in/gzh9242	10
10	Click the help button to get help on next move @ https://gbud.in/gzh9242	11
11	Solve more medium puzzles @ https://gbud.in/chsmdpz	11
12	Solve other puzzles @ https://gbud.in/chsgppz	11

13	Play chess online for free. Solve puzzles and play with friends	12
14	Solve this puzzle online by scanning this QR code or go to the link below	13

Medium Chess puzzle # 0067 - Mate in 3 moves

Solve this medium chess puzzle and improve your chess games through improvement of your chess strategies and chess tactics.

Puzzle No : 0067

Difficulty level : medium

Description : Mate in 3 moves

Next Move : White

Player level : Intermediate

Short URL for puzzle : <https://gbud.in/gzh9242>

Medium chess puzzle 0067

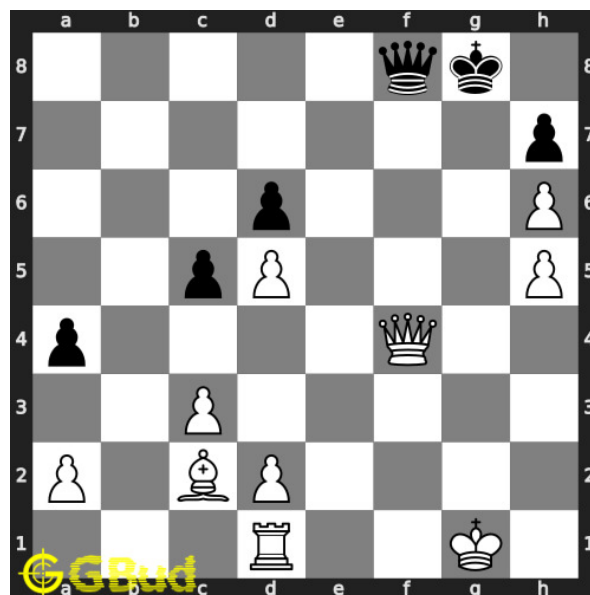


Figure 1: Solve this medium chess puzzle 0067. Mate in 3 moves @ <https://gbud.in/gzh9242>



Figure 2: Solve this medium chess puzzle online with solution @ <https://gbud.in/gzh9242>

Solution to medium chess puzzle 0067

At this puzzle, next **move** is by **White**. The objective of the puzzle is to mate in 3 moves.

See the interactive solution at the [puzzle page](#)

Solution 1

Initial board position This is the initial board position of medium chess puzzle 0067.

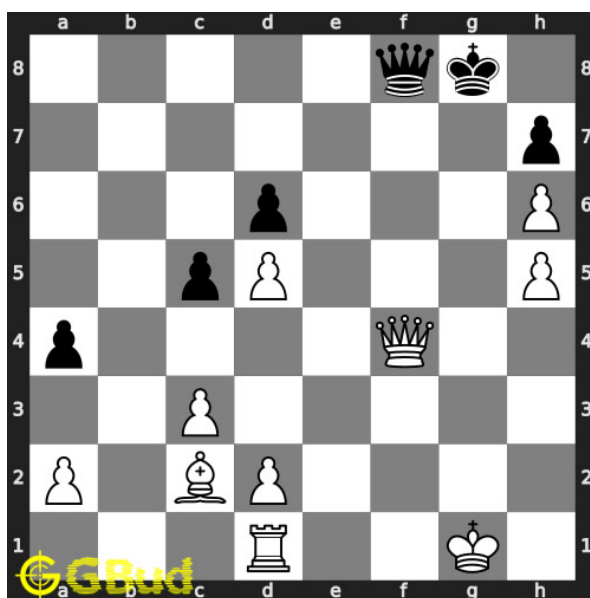


Figure 3: Initial board position of medium chess puzzle 0067

Move 1 Move by white

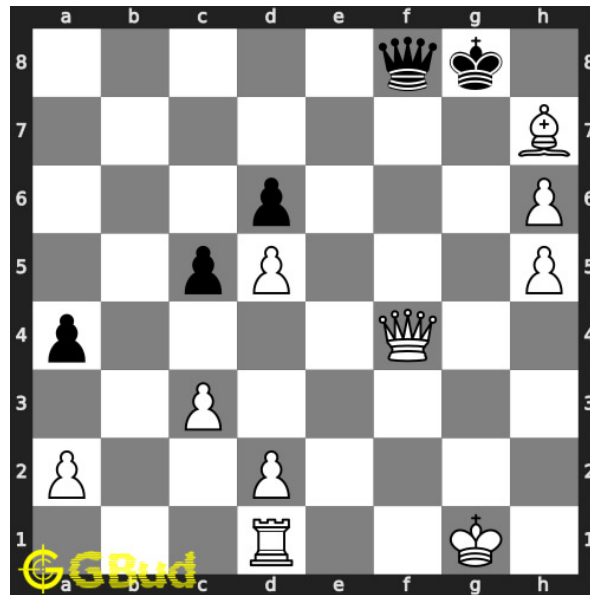


Figure 4: Bxh7+ - If you deflect the opponent's king away from the queen, you can capture the hanging queen. The bishop sacrifices itself to attract the king away from g8

Move 2 Move by black

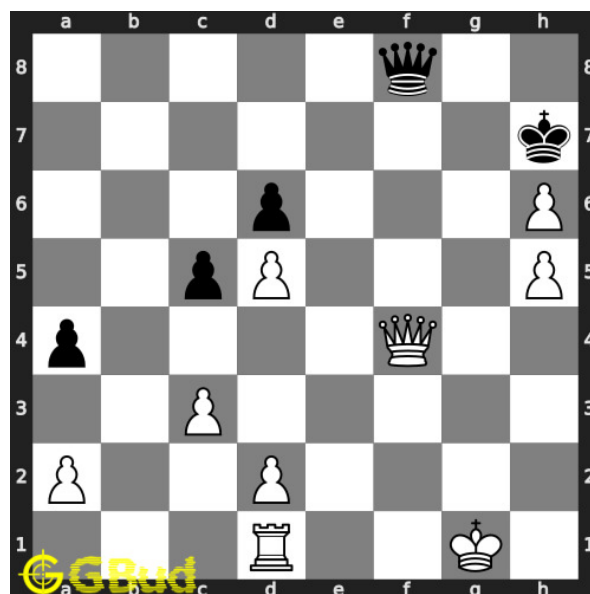


Figure 5: Kxh7 - Opponent's king is forced to capture the bishop. He can not come to g7 due to the attack from the pawn. If he moves to h8, you can end the game by moving your queen to f8, This is a zugzwang move

Move 3 Move by white

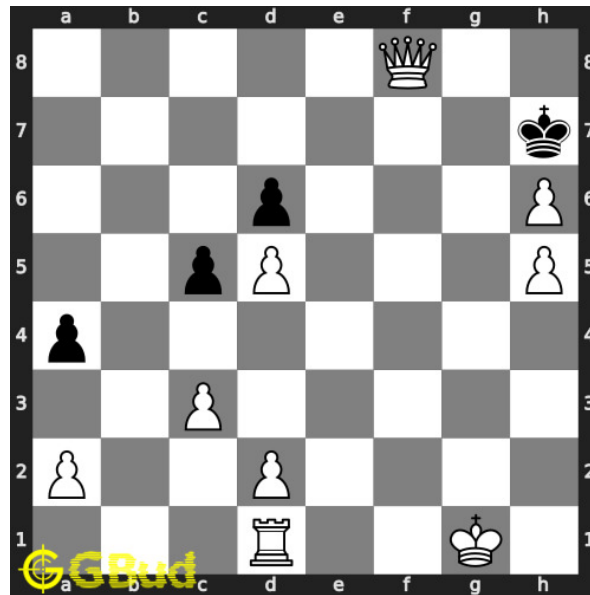


Figure 6: Qxf8 - Your queen captures the opponent's hanging queen and it restricts the opponent's king's movements

Move 4 Move by black

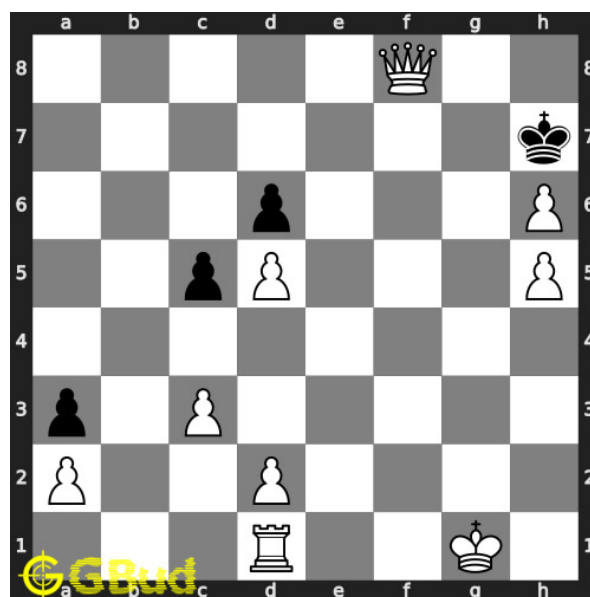


Figure 7: a3 - Since the king does not have any legal moves, one of the pawn moves forward

Move 5 Move by white

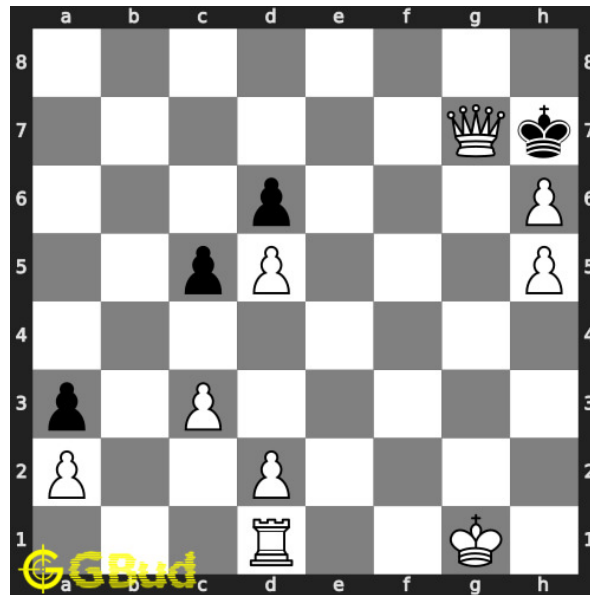


Figure 8: $Qg7\#$ - Queen moves in and gives a checkmate. Opponent's king can not capture your queen since it is supported by the pawn

Right moves for the solution to the medium chess puzzle 0067

Based on the objective of the puzzle, you have to make the right moves. Following are the right moves

1. $Bxh7+$, $Qxf8$, $Qg7\#$

Explanation for the moves

1. $Bxh7+$ - If you deflect the opponent's king away from the queen, you can capture the hanging queen. The bishop sacrifices itself to attract the king away from g8
2. $Qxf8$ - Your queen captures the opponent's hanging queen and it restricts the opponent's king's movements
3. $Qg7\#$ - Queen moves in and gives a checkmate. Opponent's king can not capture your queen since it is supported by the pawn
4. $Kxh7$ - Opponent's king is forced to capture the bishop. He can not come to g7 due to the attack from the pawn. If he moves to h8, you can end the game by moving your queen to f8, This is a zugzwang move
5. $a3$ - Since the king does not have any legal moves, one of the pawn moves forward
6. For right move - You have sacrificed your bishop to have a checkmate in 3 moves. It was a wise decision

7. For wrong move - You could have attracted the opponent's king using your bishop to have a checkmate in three moves. Try again

Categories of medium chess puzzle 0067

This medium chess puzzle falls in these categories.

1. [Medium chess puzzles](#)
2. [Sacrifice puzzles in chess](#)
3. [Mate in 3 puzzles in chess](#)
4. [Endgame puzzles in chess](#)
5. [Strategy puzzles in chess](#)
6. [Zugzwang puzzles in chess](#)
7. [Queen puzzles in chess](#)
8. [Bishop puzzles in chess](#)

How to view the solution to medium chess puzzle 0067

To view the [solution to this puzzle](#), follow the steps given below

1. Go to the [puzzle page](#)
2. Click the solution button (Key as shown [below](#)) to view the solution

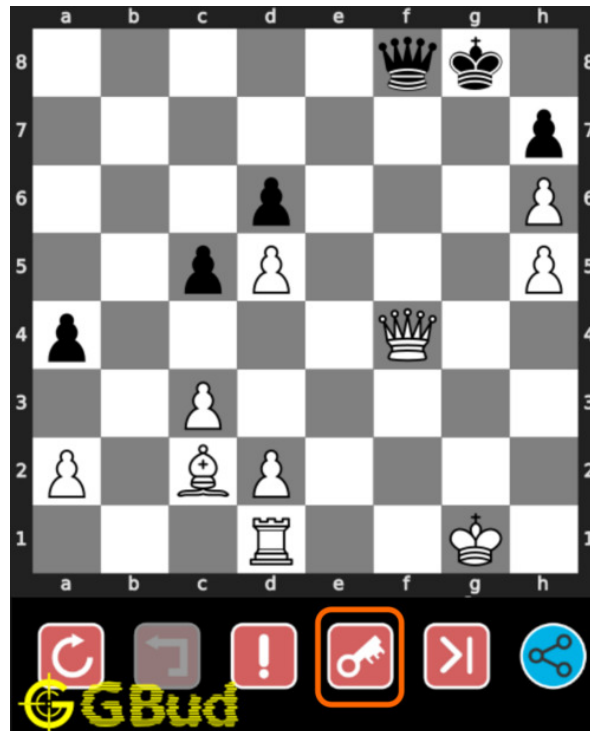


Figure 9: Click the solution button to view solutions @ <https://gbud.in/gzh9242>

How to get help for moves in the medium chess puzzle 0067

To get help or the possible next moves in the puzzle, , follow the steps given below

1. Go to the [puzzle page](#)
2. Click the help button (exclamation mark as shown [below](#)) to get help or suggestion on next possible [move](#)



Figure 10: Click the help button to get help on next move @ <https://gbud.in/gzh9242>



Figure 11: Solve more medium puzzles @ <https://gbud.in/chsmdpz>



Figure 12: Solve other puzzles @ <https://gbud.in/chsgppz>

Play chess for free

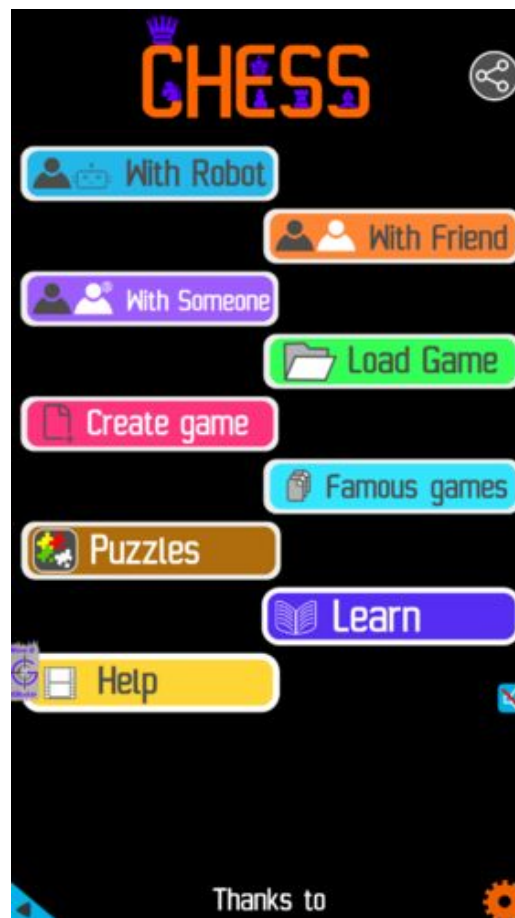


Figure 13: Play chess online for free. Solve puzzles and play with friends

Play chess for free at <https://gbud.in/chs>

We present you a platform to play chess online with friends for free. No need to install any app. You can play chess for free without registration or login.

Simple. You can do several chess related activities.

1. [solve chess puzzles](#)
2. [learn about chess](#)
3. [play chess with computer](#)
4. [play chess with friend](#)
5. [create your own chess games](#)
6. [fen viewer](#)
7. [fen editor](#)
8. [fen generator](#)
9. [pgn viewer](#)
10. [chess board editor](#)

11. [view famous chess games.](#)



Figure 14: Solve this puzzle online by scanning this QR code or go to the link below

<https://gbud.in/gzh9242>

Read the latest article on Medium Chess puzzle # 0067 - Mate in 3 moves by scanning this QR code or click the link

Previous article : [« Medium Chess puzzle # 0066 - Mate in 3 moves](#)

Next article : [Medium chess puzzles »](#)

[Back to top](#)

[Contact Us](#)

© GBud Games 2021